

NOTICE OF RACE

Carey Olsen Jersey Regatta

incorporating the IRC Channel Islands Championship

2-4 September 2022



Contact us:

T +44 1534 732229 E info@jerseyregatta.com W jerseyregatta.com  [jerseyregatta](https://www.facebook.com/jerseyregatta)  [jerseyregatta](https://twitter.com/jerseyregatta)

OFFSHORE LAW SPECIALISTS

BERMUDA BRITISH VIRGIN ISLANDS CAYMAN ISLANDS GUERNSEY JERSEY
CAPE TOWN HONG KONG SAR LONDON SINGAPORE

careyolsen.com



CAREY OLSEN

JERSEY REGATTA

Incorporating the 9th GBR IRC Channel Islands Regional Championship

Friday 2nd – Sunday 4th September 2022

Notice of Race (NoR)

Organising Authority (OA):

Royal Channel Islands YC (RCIYC), St Helier YC (SHYC) and St Catherine's SC (SCSC)

1. RULES

- 1.1. The event is governed by
 - 1.1.1. The rules as defined in *The Racing Rules of Sailing* (RRS);
 - 1.1.2. The Prescriptions of the Royal Yachting Association (RYA)(Ref. www.rya.org.uk/SiteCollectionDocuments/Racing/RacingInformation/RacingRules/RYA-Prescriptions.pdf);
 - 1.1.3. The RRS are changed as follows:
 - 1.1.3.1. RRS 52 – Manual Power – for sportsboat and cruiser/racer classes: **except when starting**, 'two-handed' boats are permitted to use automatic steering without restriction;
- 1.2. World Sailing (WS) Offshore Special Regulations Category 4 will apply (Ref. [www.sailing.org/tools/documents/mu42021-\[26837\].pdf](http://www.sailing.org/tools/documents/mu42021-[26837].pdf));
- 1.3. For vessels with a valid IRC Rating Certificate:
 - 1.3.1. IRC Rule 2022 parts A,B & C including changes will apply (Ref. ircrating.org/irc-rule/);
 - 1.3.2. For the purpose of IRC Rule 21.1.5(d) and (e), the Regatta is on consecutive days and the sails carried shall remain the same throughout;
- 1.4. The navigation rules of the International Regulations for Preventing Collisions at Sea (IRPCAS) will apply when competing boats meet other traffic;
- 1.5. Ports of Jersey General Direction 14 (Navigation in Approach Channels) will apply (Ref. www.ports.je/jerseyharbours/regulationguidance/)
- 1.6. Cruiser/racers without an IRC Rating will race under the RYA National Handicap for Cruisers system (NHC). A local boat will start with their latest progressive handicap or, for new boats, the RYA Base Number or a number calculated by the OA where no Base Number exists. Thereafter, a boat's handicap will be recalculated after every race;
- 1.7. A minimum of **three** entries is required to constitute a class;
- 1.8. The Post Race Penalty, Advisory Hearing and RYA Arbitration procedures of the RYA Rules Disputes Procedures will apply (Ref. www.rya.org.uk/racing/racing-rules/racing-rules-guidance). The outcome of an RYA Arbitration can be referred to a protest committee but an arbitration cannot be reopened or appealed.

2. SAILING INSTRUCTIONS

- 2.1. The sailing instructions will be available on www.jerseyregatta.com no later than Monday 11th July;
- 2.2. The sailing instructions will consist of the instructions in RRS Appendix S, Standard Sailing Instructions, and any supplementary sailing instructions that will be published on the official notice board.

3. COMMUNICATION

- 3.1. The official notice board will be located on-line at www.jerseyregatta.com;
- 3.2. All boats in the sportsboat, cruiser/racer and F18 sport catamaran classes shall carry an operational fixed and/or handheld marine VHF transceiver;
- 3.3. On the water, Race Committee Boat A (Alpha) will make courtesy broadcasts to competitors on a channel to be stated in the SIS. Non-reception of any such broadcast shall not provide grounds for an application for redress;
- 3.4. From the warning signal until the end of each race, except in an emergency, a boat shall not make voice or data transmissions and shall not receive voice or data communication that is not available to all boats.

4. ELIGIBILITY - The Regatta is open to boats with a valid rating certificate or handicap in the following classes:

4.1. Sportsboat and Cruiser/racer

- 4.1.1. Class 0 - Sportsboat - IRC rating greater than 0.965 ^{Note 2}
- 4.1.2. Class 1 - Cruiser/racer - IRC rating equal to or greater than 0.972
- 4.1.3. Class 2 - Cruiser/racer - IRC rating less than 0.972
- 4.1.4. Class QT - Quarter Ton - IRC ^{Note 3}
- 4.1.5. Class 3a - Cruiser/racer - NHC (spinnaker)
- 4.1.6. Class 3b - Cruiser/racer - NHC (no spinnaker)

4.2. Dayboat

- 4.2.1. Class 4 - Jersey Dayboat Rating (available on application)

4.3. Small Catamaran (SCHRS)

- 4.3.1. Class 5 - rating equal to or less than 1.000
- 4.3.2. Class 6 - rating greater than 1.000 up to and including 1.250
- 4.3.3. Class 7 - rating greater than 1.250

4.4. Dinghy (Portsmouth Yardstick Number)

- 4.4.1. Class 8 - PN equal to or less than 1208 ^{Note 5}
- 4.4.2. Class 9 - PN greater than 1208 ^{Notes 5 & 6}

4.5. Windsurfer

- 4.5.1. Class W - Kona (One design)

Notes:

1. Classes may be altered, amalgamated or divided at the discretion of the OA;
2. A Class 0 boat's parameters shall include a DLR less than 150, LH less than 10m and a TCC greater than 0.950;
3. To qualify as a Quarter Ton boat, a boat shall have had an IOR rating of 18.5 or less during the period 1970 to 1996. In the case of series production boats only one of the series needs to have had a rating of 18.5 or less (Ref. Quarter Ton Class - <http://www.quartertonclass.org>);
4. Class flags – whilst racing, each boat in Classes 0, 1, 2, 3a, 3b and QT **shall** provide and display her own class flag from the back-stay, shroud or push-pit if no backstay exists. Class flags are numeral pennants 0, 1, 2, 3 and International Code flag Q, respectively. Classes 3a and 3b will race under numeral pennant 3;
5. The combined number of boats in Classes 8 and 9 is provisionally restricted to sixty. The OA may adjust this number at its discretion;
6. Class 9 – Subject to the limitation on numbers described in Note 6, entries will normally be accepted from children aged 10 years and above. Exceptionally, entries from younger children with recognised racing experience may be accepted at the discretion of the OA.

5. ENTRY

- 5.1. Eligible boats may enter by completing the on-line entry form on www.jerseyregatta.com (Select 'Enter Here' on the header of the front page);
- 5.2. The cut-off date for entries is Friday 26th August;
- 5.3. Classification - the final entry classification will be posted on the official notice board no later than Sunday 28th August ;

- 5.4. Parental consent – competitors under 18 years of age may enter by completing both the on-line entry and parental consent forms. Persons-in-Charge aged 18 years and above shall provide a parental consent form for any crew member under 18 years of age;
- 5.5. To be considered an entry, a boat shall complete all entry requirements and pay all fees no later than Friday 26th August.

6. FEES

6.1. 'Early Bird' entry fees will apply up to and including Friday 12th August, as follows:

- 6.1.1. Classes 0, 1, 2, 3 and QT - £40.00;
- 6.1.2. Classes 0, 1, 2, 3 and QT - for boats sailing in Friday's coastal race only - £17.00;
- 6.1.3. Classes 4, 5, 6, 7, 8, 9 and W - £20.00 or £13.00 where a boat is to be helmed **and** crewed only by competitors under the age of 18 years throughout the event;

6.2. Thereafter, standard entry fees will apply until the cut-off date (Friday 26th August), as follows:

- 6.2.1. Classes 0, 1, 2, 3 and QT - £55.00;
- 6.2.2. Classes 0, 1, 2, 3 and QT - for boats sailing in Friday's coastal race only - £22.00;
- 6.2.3. Classes 4, 5, 6, 7, 8, 9 and W - £28 or £20.00 where a boat is to be helmed and crewed by competitors under the age of 18 years throughout the event;

6.3. Fees will not be refunded except at the discretion of the OA.

7. ADVERTISING - Boats may be required to display advertising provided by the sponsor.

8. SCHEDULE - See 'Regatta Race Programme'

- 8.1. Appendix 1.1 – Classes 0, 1, 2, QT, 3a/3b and 5;
- 8.2. Appendix 1.2 – Classes 4, 5 (Friday), 6, 7, 8, 9 and W.

9. EQUIPMENT INSPECTION

- 9.1. Where not previously provided to the OA, the RCIYC or SHYC, boats in Classes 0, 1, 2 & QT shall submit a copy of their valid IRC Rating certificate to the Regatta Office no later than Friday 26th August. No alteration to a boat's TCC will be permitted after that date except as a result of a rating protest or to correct Rating Authority errors;
- 9.2. All boats shall comply with RRS 78.1 (Compliance with Class Rules; Certificates) throughout the Regatta;
- 9.3. Boats may be inspected at any time.

10. VENUE

- 10.1. Appendix 2a shows the principal racing area; marks located outside the vicinity of St Aubin's Bay are not shown;
- 10.2. The Regatta Office is located at SHYC;
- 10.3. The social venues will be SHYC and the RCIYC (See Appendix 4 for the Regatta social programme).

11. COURSES

- 11.1. Classes 0, 1, 2, 3a/3b & QT – 'Round the Cans' courses will be set in St Aubin's Bay and Jersey's coastal waters (Ref. Appendices 2a to 2d) and will be contained entirely within Admiralty Chart 2669 (SCF5604.4 and SCF5604.13);
- 11.2. Class 5 - Friday – as S11.3 below. Saturday and Sunday – as S11.1 above;
- 11.3. Classes 4, 6, 7, 8, 9 and W – laid courses will be set within St Aubin's Bay (Ref. Appendix 3);
- 11.4. Detailed course information will be provided in the SIs.

12. PENALTY SYSTEM - For classes 4, 5, 6 and 7 the Two-Turns Penalty is replaced by the One-Turn Penalty. This changes RRS

44.1.

13. SCORING

- 13.1. For all classes - races scheduled for Friday will be standalone and not count towards the Regatta series scoring;
- 13.2. For all classes - all races scheduled for Saturday and Sunday will count towards each day's place prizes and trophies, i.e. no result will be excluded;

13.3. For the purposes of determining the Best-in-Class boat in each Class and the Island ARK Quarter Ton Trophy, all races completed on Saturday and Sunday will constitute a series for all classes as follows:

13.3.1. Classes 0, 1, 2, QT and 3a/3b - when fewer than four races have been completed a boat's series score will be the total of her race scores. When four races have been completed a boat's score will be the total of her race scores excluding her worst score;

13.3.2. For the purposes of determining the GBR IRC Channel Islands Championship in Classes 1 and 2/QT:

13.3.2.1. Class 1 – as 13.3.1, above;

13.3.2.2. Classes 2 and QT will sail according to the same programme. Their series results will be combined for the purposes of determining the overall winner of the Championship. When fewer than four races have been completed a boat's series score will be the total of her race scores. When four races have been completed a boat's series score will be the total of her race scores excluding her worst score;

13.3.3. Classes 4, 5, 6, 7, 8, 9 and W - when fewer than six races have been completed a boat's series score will be the total of her race scores. When six races have been completed a boat's score will be the total of her race scores excluding her worst score.

14. CHARTERED OR LOANED BOATS – A chartered or loaned boat may carry national letters or a sail number in contravention of her class rules, provided that the race committee has approved her sail identification before the first race.

15. BERTHING & PARKING

15.1. Classes 0, 1, 2, QT, 3a/3b and 4 - complimentary berthing will be provided in La Collette Marina;

15.2. Classes 5, 6 and 7 - Gun Site Hobie Cat fleet base;

15.3. Classes 8 & 9 - RCIYC, St Aubin;

15.4. Class W - Bel Royal beach.

16. HAUL-OUT RESTRICTIONS - Boats in Classes 0, 1, 2, QT, 3a/b and 4 shall not be hauled out during the event except in an emergency or with and according to the terms of the prior written permission of the Race Committee. (Hauling Out includes the use of legs, cradle berths and other forms of drying out that might be used over a low tide).

17. DIVING EQUIPMENT AND PLASTIC POOLS

17.1. Underwater breathing apparatus and plastic pools or their equivalent shall not be used around keelboats between the preparatory signal of the first race and the end of the last race each day;

17.2. Keelboats shall not be cleaned below the waterline by any means during the event.

18. DATA PROTECTION – the use of data provided by an entrant to the OA is governed by the Data Protection (Jersey) Law 2018 (Ref. Policy statement located on the official notice board);

19. RISK STATEMENT – RRS3 states that the responsibility for a boat's decision to participate in a race or to continue racing is hers alone. Sailing is by its nature an unpredictable sport and therefore inherently involves an element of risk. By taking part in the event, each competitor agrees and acknowledges that:

19.1. They are aware of the inherent element of risk involved in the sport and accept responsibility for the exposure of themselves, their crew and their boat to such inherent risk whilst taking part in the event;

19.2. They are responsible for the safety of themselves, their crew, their boat and their other property whether afloat or ashore;

19.3. They accept responsibility for any injury, damage or loss to the extent caused by their own actions or omissions;

19.4. Their boat is in good order, equipped to sail in the event and they are fit to participate;

19.5. The provision of a race management team, patrol boats and other officials and volunteers by the event organiser does not relieve them of their own responsibilities;

19.6. The provision of patrol boat cover is limited to such assistance, particularly in extreme weather conditions, as can be practically provided in the circumstances;

19.7. It is their responsibility to familiarise themselves with any risks specific to the venue or this event drawn to their attention in any rules and information produced for the venue or event and to attend any safety briefing held for the event;

19.8. Persons-in-Charge, and their crew, shall familiarise themselves with and observe the applicable Government of Jersey Guidelines relating to Covid as it applies at the time of the event (Ref. <https://www.gov.je/health/coronavirus>).

20. INSURANCE - Each participating boat shall be insured with current third party liability insurance with a minimum cover of £3,000,000 (three million pounds sterling or the equivalent in euros) per incident; this insurance shall include racing cover.

21. PRIZES

21.1. Perpetual trophies will be awarded as indicated in the Race Programme, Appendices 1.1 and 1.2;

21.2. Place prizes will be awarded in each class, as follows:

21.2.1. When three boats are entered – first and second prizes only;

21.2.2. When four or more boats are entered – first, second and third prizes only;

21.3. Carey Olsen Jersey Regatta ‘Best-in-Class’ prizes will be awarded to the boats with the lowest series scores in their respective classes;

21.4. The GBR IRC Channel Islands Championship trophies and Spinlock prizes will be awarded to:

21.4.1. Class 1 - the boat with the lowest series score;

21.4.2. Class 2 and QT – the best performing boat arising from the combination of Classes 2 and QT results;

21.5. The Island ARK Trophy will be awarded to the boat with the lowest series score in Class QT;

21.6. The Prize-giving will take place in St Helier YC as soon as possible after 1930 hours, Sunday 4th September.

22. FURTHER INFORMATION - For further information, please e-mail: info@jerseyregatta.com or call +44 (0) 1534 732229.
Postal address: Carey Olsen Jersey Regatta, c/o St Helier YC, South Pier, St Helier, Jersey JE2 3NB.



Friday - Classes 0, 1, 2, 3a, 3b & QT

Saturday / Sunday - Classes 0, 1, 2, 3a, 3b, 5 & QT

COMMITTEE BOAT A (Carey Olsen flag)

Warning Signal	Race	Class
Friday 2nd September – High Water: 1045 hours – Height: 9.7m		
COASTAL RACE		
0855	SHYC Bill Coom Cup	Sportsboat 0
0855	RCIYC Tom Lee Memorial Trophy	IRC Cruiser/racer 1
0905	SHYC – Cruising Trophy	IRC Cruiser/racer 2
0905	Day 1 Salver	Quarter Ton QT
0915	RCIYC Mallard Trophy (spinnaker)	NHC Cruiser/racer 3a
0915	SHYC Trophy (no spinnaker)	NHC Cruiser/racer 3b
Saturday 3rd September – High Water: 1122 hours – Height: 9.1m		
0925	RCIYC 1 st Elfin Cup – 2 races back-to-back	Sportsboat 0
0925	SHYC Ken Budden Trophy – 2 races back-to-back	IRC Cruiser/racer 1
0935	SHYC Nautilus Trophy – 2 races back-to-back	IRC Cruiser/racer 2
0935	Day 2 Salver – 2 races back-to-back	Quarter Ton QT
0945	RCIYC Morgan Grenfell Trophy 1: 2 races back-to-back (spinnaker)	NHC Cruiser/racer 3a
0945	RCIYC Trophy (no spinnaker)	NHC Cruiser/racer 3b
0955	RCIYC Fairy Trophy – 3 races back-to-back	Sport-catamaran 5
Sunday 4th September – High Water: 1215 hours – Height: 8.5m		
0955	RCIYC Bolitho Urn – 2 races back-to-back	Sportsboat 0
0955	SHYC Commodore’s Cup – 2 races back-to-back	IRC Cruiser/racer 1
1005	SHYC Tregear Cup – 2 races back-to-back	IRC Cruiser/racer 2
1005	Day 3 Salver – 2 races back-to-back	Quarter Ton QT
1015	RCIYC Morgan Grenfell Trophy 2: 2 races back –to-back – (spinnaker)	NHC Cruiser/racer 3a
1015	SHYC Trophy (no spinnaker)	NHC Cruiser/racer 3b
1025	RCIYC Lazard Trophy – 3 races back-to-back	Sport-catamaran 5

Note: For Saturday and Sunday, succeeding races will start as soon as possible after the finish of the preceding race in accordance with any time limit.

Appendix 1.2. Race programme

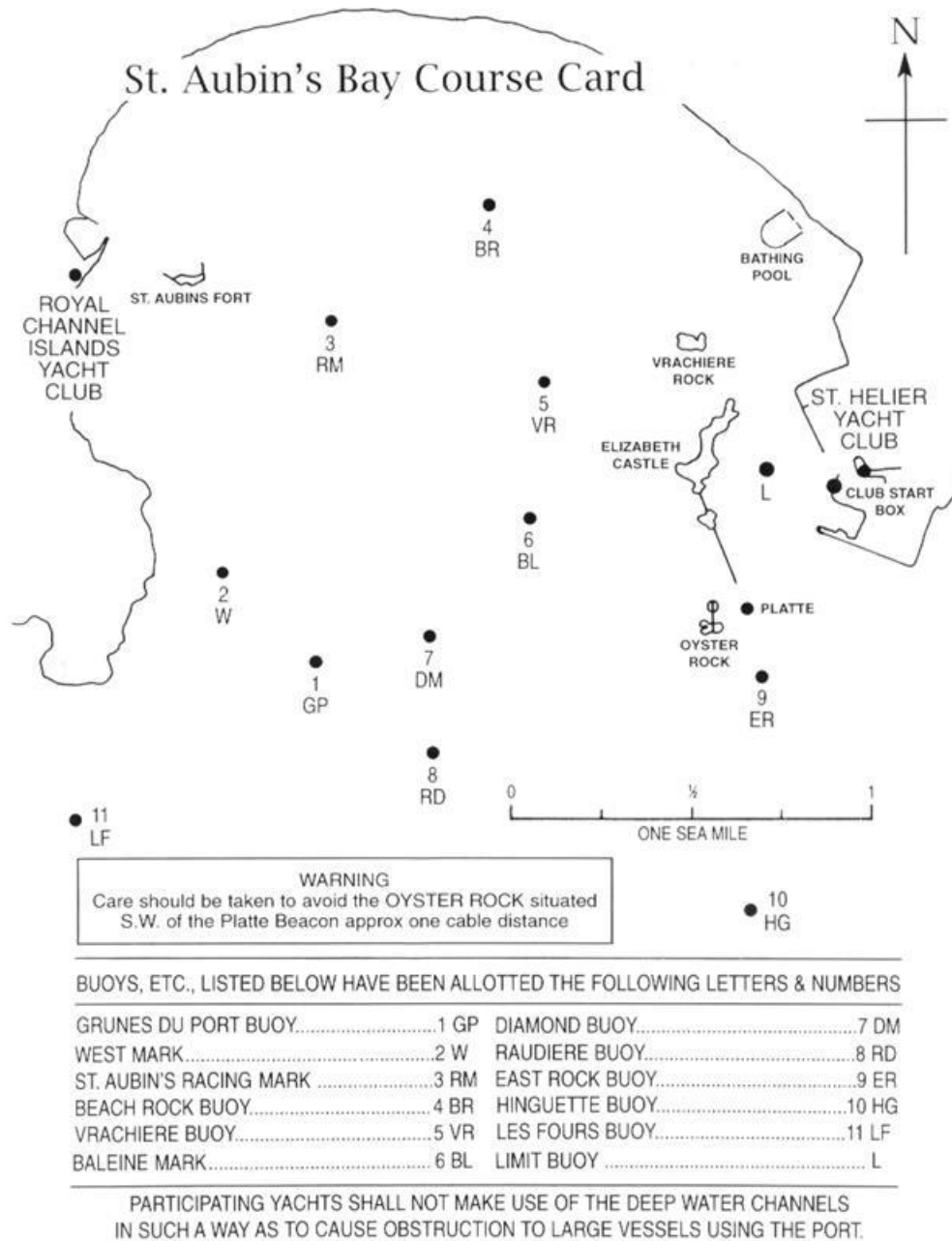
Friday - Classes 4, 5, 6, 7, 8, 9 & W

Saturday / Sunday - Classes 4, 6, 7, 8, 9 & W

COMMITTEE BOAT B (Yellow flag)

Warning Signal	Race	Class	Class
Friday 2nd September – High Water: 2301 hours – Height: 9.6m			
1655	RCIYC Shield	Open Dinghy	9
1705	SHYC 'Pop' Langlois Trophy	Open Dinghy	8
1715	RCIYC 2 nd Elfin Cup	Dayboat	4
1725	SHYC Ratner Trophy	Sport-catamaran	6
1735	RCIYC Fotosound Trophy	Sport-catamaran	5
1745	Kona Trophy	Windsurfer	W
Saturday 3rd September – High Water: 1122 hours – Height: 9.1m			
0855	Kona Day 1 Trophy – 3 races back-to-back	Windsurfer	W
0905	RCIYC Gaiety Bowl – 3 races back-to-back	Sport-catamaran	6
0915	RCIYC Day 1 Shield – 3 races back-to-back	Sport-catamaran	7
1045	RCIYC Nick Orchard Trophy – 3 races back-to-back	Open Dinghy	9
1055	SHYC Howard Trophy - 3 races back-to-back	Open Dinghy	8
1105	SHYC Wings Trophy – 3 races back-to-back	Dayboat	4
Sunday 4th September – High Water: 1215 hours – Height: 8.5m			
0925	Kona Day 2 Trophy – 3 races back-to-back	Windsurfer	W
0935	RCIYC Caprice Salver – 3 races back-to-back	Sport-catamaran	6
0945	RCIYC Day 2 Shield – 3 races back-to-back	Sport-catamaran	7
1115	RCIYC Enterprise Trophy – 3 races back-to-back	Open Dinghy	9
1125	SHYC Canadian Club Trophy – 3 races back-to-back	Open Dinghy	8
1135	SHYC RNVR Trophy – 3 races back-to-back	Dayboat	4

Note: For back-to-back races, succeeding races will start as soon as possible after the finish of the preceding race in accordance with any time limit.

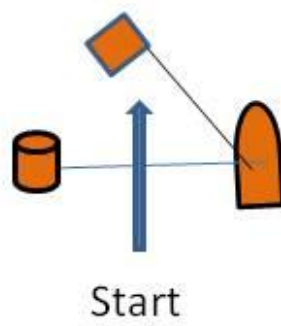


Appendix 2b. Marks – St Aubin's Bay

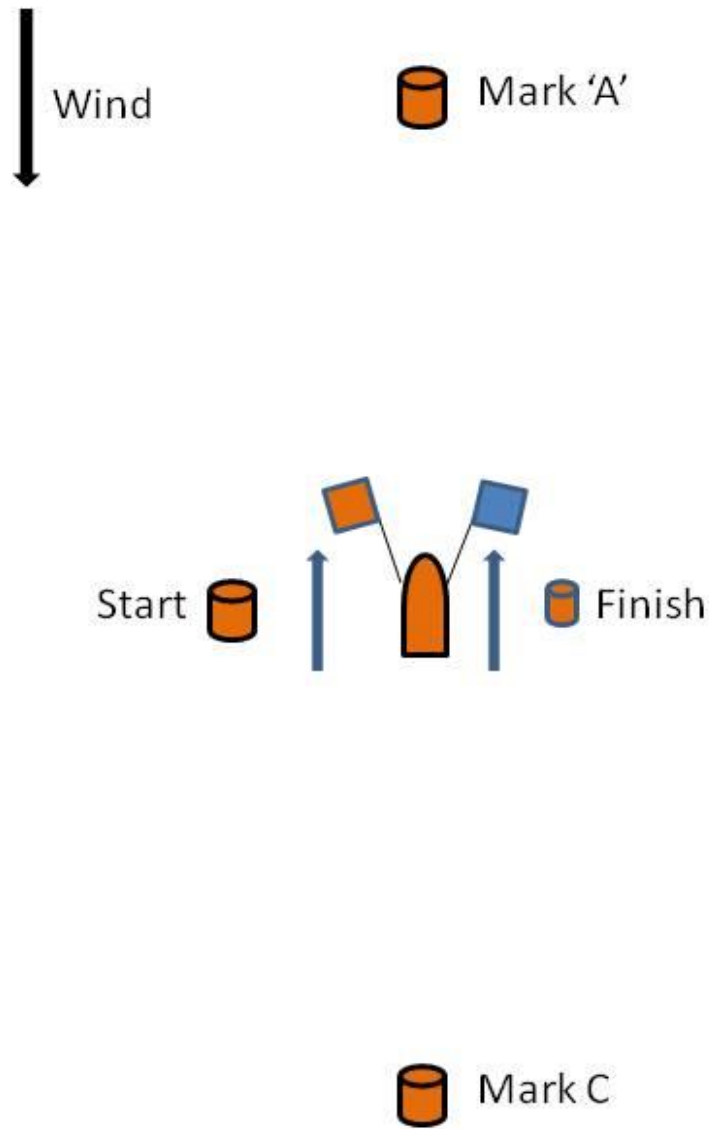
ID	MARKS	Colour	Approximate position
A	Windward mark of a windward/leeward course	Orange	Laid on the day
C	Leeward mark of a windward/leeward course	Orange	Laid on the day
1 - GP	Grunes du Port buoy	Red	49°10.03'N, 02°09.12'W
2 - W	West Mark	Yellow	49°10.220'N, 02°09.393' W
3 - RM	St Aubin's Race Mark	Yellow	49°11.10'N, 02°09.21'W
4 – BR	Beach Rock buoy	Yellow	49° 11.30'N, 02° 08.42'W
5 - VR	Vrachère buoy	Yellow	49°10.94'N, 02°08.10'W
6 – BL	Baleine Buoy	Green	49°10.42'N, 02°08.22'W
7 - DM	Diamond Rock buoy	Red	49°10.12'N, 02°08.61' W
8 - RD	Ruaudière buoy	Green	49°09.77'N, 02°08.60'W
9 – ER	East Rock buoy	Green	49°09.97'N, 02° 07.30' W)
10 – HG	Les Hinguettes buoy	Red	49°09.32'N, 02°07.30'W
11 – LF	Les Fours buoy	North cardinal	49°09.60'N, 02°10.18'W
12	Passage Rock buoy	North cardinal	49°09.74'N, 02°12.28'W
15	Demie de Pas lighthouse	An orange inflatable mark laid close northwest of the lighthouse	49°09.10'N, 02°06.30'W
16	An inflatable mark located approximately 1.25 nautical miles southwards of St Aubin's Bay. Position and description to be promulgated by Amendment posted on the official notice board (www.jerseyregatta.com) no later than 1800hrs Wednesday 31st August.		



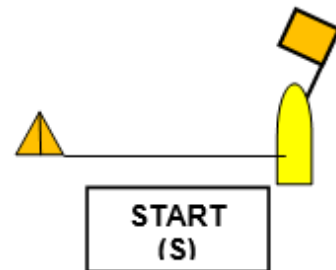
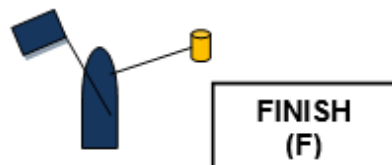
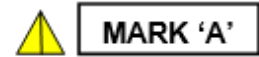
 Mark 'A'



 Mark C



Appendix 3. CBB - course layout – Classes 4, 5, 6, 7, 8, 9 & W



Course Nr	(Note: for Classes 7 & 9, the windward mark is Mark A2)								
1	(S)	A	B	C	(F)				
2	(S)	A	B	C	B	C	(F)		
3	(S)	A	B	C	B	C	B	C	(F)
4	(S)	A	D	A	B	C	(F)		
5	(S)	A	D	A	D	A	B	C	(F)
6	(S)	A	W	C	(F)				
7	(S)	A	W	C	B	C	(F)		
8	(S)	A	W	C	B	W	C	(F)	

Appendix 4. Social programme

Thursday 1st to Sunday 4th September 2022

	Function	Time	Venue
Thursday	• Welcoming reception	1900	St Helier YC
	• Skippers' briefing	1915	
	Classes 4, 5, 6, 7, 8, 9 & W Classes 0, 1, 2, QT, 3a, 3b & 5	1930	
Friday	• Reception and supper	1900	RCIYC 
Saturday	• Regatta Party	1900	RCIYC 
Sunday	• Reception and supper	1830	St Helier YC
	• Prize-giving – 1st place prizes and trophies Note 1		
	• Close		

Notes

1. Only trophies, first place prizes and any special prizes will be presented at the prize-giving. Second and third place prizes will be available for collection in the Westward Room following the prize-giving.
2. Receptions and suppers on Thursday, Friday and Sunday are included in the entry fee. Saturday's Regatta Party is not included. Tickets will be available from both the RCIYC and SHYC priced at £17.50/head.