

SAILING INSTRUCTIONS – CLASSES 0, 1, 2Q, 3A, 3B & 5

Carey Olsen Jersey Regatta

incorporating the IRC Channel Islands Championship

13-15 September 2024



Contact us:

T +44 1534 732229 E info@jerseyregatta.com W jerseyregatta.com  [jerseyregatta](https://www.facebook.com/jerseyregatta)  [jerseyregatta](https://twitter.com/jerseyregatta)

OFFSHORE LAW SPECIALISTS

BERMUDA BRITISH VIRGIN ISLANDS CAYMAN ISLANDS GUERNSEY JERSEY
CAPE TOWN HONG KONG SAR LONDON SINGAPORE

careyolsen.com



CAREY OLSEN

JERSEY REGATTA 2024

Incorporating the 11th GBR IRC Channel Islands Regional Championship

Friday 13th September – Sunday 15th September 2024

Sailing Instructions (SIs)

Classes 0, 1, 2Q, 3a, 3b & 5

Organising Authority (OA):

Royal Channel Islands YC (RCIYC), St Helier YC (SHYC) and St Catherine's SC (SCSC)

All times are Local Time (UTC + 1)

1. **RULES** - the event is governed by the rules as defined in *The Racing Rules of Sailing* (RRS).
2. **CHANGES TO SAILING INSTRUCTIONS** - any change to the sailing instructions will be posted before 0800 hours on the day it will take effect except that any change to the schedule of races will be posted before 2000 hours on the day before it will take effect.
3. **COMMUNICATIONS WITH COMPETITORS**
 - 3.1. Notices to competitors will be posted on the Official Notice Board (ONB) located at www.jerseyregatta.com and on the physical notice boards at the RCIYC and SHYC;
 - 3.2. The race office is located at SHYC, tel. 732229, e-mail: info@jerseyregatta.com;
 - 3.3. On the water, the race committee intends to monitor and communicate with competitors on VHF radio channel 8 or such other channel as the Race Committee may designate. Such communication may include information concerning the course to be sailed and a countdown to the start. Non-reception of any communication by any boat shall not provide grounds for redress. This changes RRS 62.1;
 - 3.4. While racing, except in an emergency, a boat shall not make voice or data transmissions and shall not receive voice or data communication that is not available to all boats.
4. **SIGNALS MADE ASHORE** will be displayed on the signal masts at the RCIYC and SHYC.
5. **SCHEDULE OF RACES – CLASSES 0, 1, 2Q, 3a, 3b and 5:**
 - 5.1. Friday 13th, Saturday 14th and Sunday 15th September – Racing for all classes (excepting Class 5 on Friday);
 - 5.2. See 'Race Programme' - Appendix 1 - for the schedule of races;
 - 5.2.1. Saturday – no warning signal will be made after 1630 hours;
 - 5.2.2. Sunday – no warning signal will be made after 1700 hours;

5.3. Where conditions prevent any scheduled race from being run on Saturday, one race may be carried over to Sunday, following that day's normal schedule, subject to the limitation indicated in 5.2.2.

6. **CLASS FLAGS** – each boat in Classes 0, 1, 2Q, 3a and 3b shall provide its own class flag to be displayed at all times while in the race area. Class flags are:

Class	Pennant/Flag
0 - Sportsboat	0
1 - Cruiser/racer	1
2Q - Cruiser/racer	2 for cruiser; Q for Quarter Ton
3a - Cruiser/racer (Spi)	3
3b - Cruiser/racer (No spi)	3
5 - F18 Sport catamaran	5

7. **RACING AREA** - the racing area will be in St Aubin's Bay and adjacent coastal waters (Refer Appendix 2a and Admiralty Chart 2669 (SCF5604.4 and SCF5604.10)).

8. COURSES:

8.1. Friday - the course to be sailed and any other information will be promulgated by amendment no later than 1300 hours Thursday 12th September;

8.2. Saturday and Sunday - courses will comprise a combination of numbered fixed marks as indicated in Appendix 2a and/or the laid inflatable marks A and C of a windward/leeward course where A is the windward mark and C is the leeward mark as indicated in Appendices 2b and 2c;

8.3. The numbers and/or letters of such marks will be displayed on a board(s) on the race committee boat, to be read from left to right;

8.4. The background colour of a number or letter will indicate the side on which the mark is to be rounded or passed; 'green' means 'round or pass the indicated mark to starboard'; 'red' means 'round or pass the indicated mark to port';

8.5. **The finishing line will be an obstruction; boats shall not pass through the finishing line except when finishing.**

9. MARKS

9.1. Courses will use fixed marks except that marks A and C will be laid orange cylindrical buoys and mark 16, if used, will be a laid pyramid buoy (See Schedules 2a and 2b). The starting mark will be an orange cylindrical buoy; the finishing mark will be an orange 'dumpy' buoy;

9.2. Any replacement mark will be a yellow pillar buoy (Ref. SI 11).

10. THE START

10.1. Races will be started using RRS 26 with the warning signal made 5 minutes before the starting signal;

10.2. The starting line will be between a staff displaying an orange flag on the race committee boat at the starboard end and the starting mark at the port end;

10.3. Boats whose warning signal has not been made shall avoid the starting area during the starting sequence for other classes [Discretionary Penalty];

10.4. If any part of a boat's hull is on the course side of the starting line during the two minutes before its starting signal and she is identified, the race committee may broadcast its name and/or sail number on VHF Channel 8 or by hail. Failure to make such a broadcast or hail or time it accurately will not be grounds for redress, This changes RRS62.1(a);

10.5. When an inner distance mark (IDM) is laid, it shall be left to the same side as the race committee boat that it guards. Boats shall not pass between the mark and the race committee boat at any time. An IDM will not form part of the starting line transit;

10.6. A boat that does not start within the five minute period following its starting signal will be scored 'Did Not Start' without a hearing. This changes RRS A5.1 and A5.2.

11. CHANGE OF THE NEXT LEG OF THE COURSE – to change the next leg of the course, the race committee will lay a new mark (or move the finishing line) and remove the original mark as soon as practicable. When in a subsequent change a new mark is replaced, it will be replaced by an original mark.

12. THE FINISH – the finishing line will be between a staff displaying a blue flag on the race committee boat at the port end and the finishing mark at the starboard end.

13. PENALTY SYSTEM - for Class 5, RRS44.1 is changed so that the Two-Turns penalty is replaced by the One-Turn penalty.

14. TIME LIMIT - for races on Saturday and Sunday

14.1. For classes 0, 1, 2Q, 3a and 3b - boats failing to finish within **30** minutes after the first boat in their class sails the course and finishes will be scored Did Not Finish (DNF) without a hearing. This changes RRS 35, A4.1 and A5;

14.2. For Class 5 - boats failing to finish within **20** minutes after the first boat in their class sails the course and finishes will be scored Did Not Finish (DNF) without a hearing. This changes RRS 35, A4.1 and A5.

15. HEARING REQUESTS

15.1. Hearing request forms are available at the RCIYC and SHYC and on the ONB. Protests and requests for redress or reopening shall be delivered to the Regatta Office at SHYC or to the Steward at the RCIYC;

15.2. For each class, the protest time limit is 90 minutes after the last boat in the relevant class has finished the last race of the day or the race committee signals no more racing today whichever is the later;

15.3. Notices will be posted no later than 30 minutes after the protest time limit to inform competitors of hearings in which they are parties or named as witnesses and where the hearings will be held;

15.4. For the Race Committee and Protest Committee the time limit for lodging protests is extended to 150 minutes;

15.5. Notices of protests by the race committee or protest committee will be posted to inform boats under RRS 61.1(b). Such notices will be posted no later than 180 minutes after the last boat has finished the last race of the day

16. SCORING

16.1. The low point scoring system of RRS Appendix A4 will apply;

16.2. For all classes, races scheduled for Friday 13th September will be standalone and not count towards the overall Regatta scoring;

16.3. A Class 5 boat that has not finished and is still within the time limit for that race may be shown code flag 'W' indicating that it will be scored the finishing position that it currently holds. The boat shall, thereafter, proceed as quickly as possible to the starting area if a subsequent race is to be started;

16.4. For the purposes of determining the:

- 'Carey Olsen Jersey Regatta – Best in Class' boat in each class;
- GBR IRC Channel Islands Champions in Classes 1 & 2Q;
- Island ARK Quarter Ton Trophy;

All races completed on 14th and 15th September will constitute a series for all classes, as follows:

- For Classes 0, 1, 2Q, 3a and 3b - when fewer than five races have been completed a boat's series score will be the total of its race scores. When five races have been completed a boat's series score will be the total of its race scores excluding its worst score;
- For Class 5 - when fewer than six races have been completed a boat's series score will be the total of its race scores. When six races have been completed a boat's series score will be the total of its race scores excluding its worst score;

16.5. RRS 90.3(e) will apply with a time limit of one hour.

17. SAFETY REGULATIONS

17.1. A tally system will operate in the case of boats in Class 5. Boats not shown on the tally list will be scored DNS without a hearing;

17.2. Whilst SI 10.3 applies at all times, all boats shall sail in the vicinity of the race committee boat with their sail number clearly displayed prior to racing;

17.3. A boat that retires from a race shall notify the race committee or guard boat at the earliest opportunity.

18. EQUIPMENT AND MEASUREMENT CHECKS

18.1. A boat or equipment may be inspected at any time for compliance with any class rules, the Notice of Race and Sailing Instructions;

18.2. When instructed by a race official on the water, a boat shall proceed to a designated location for inspection.

19. OFFICIAL VESSELS

19.1. Race Committee Boat A will display a Carey Olsen flag;

19.2. Mark layers, guard boats and other official vessels will display a green pennant.

20. HAUL OUT RESTRICTIONS - boats shall not be hauled out during the event except in an emergency or with and according to the terms of prior written permission from the race committee. (Hauling out includes the use of legs, cradle berths and other forms of drying out that might otherwise be used over a low tide);

21. RESULTS AND PRIZES

21.1. Results will be posted on the ONB and may be displayed on the notice boards at the RCIYC and SHYC following each day's racing;

21.2. Details of trophies and prizes are shown in Appendices 1 and 3;

21.3. The prize-giving is scheduled to commence in SHYC as soon as possible after 1900 hours Sunday 15th September.

22. RISK STATEMENT - RRS 3 states: 'The responsibility for a boat's decision to participate in a race or to continue to race is hers alone.' By participating in this event each competitor agrees and acknowledges that sailing is a potentially dangerous activity with inherent risks. These risks include strong winds and rough seas, sudden changes in weather, failure of equipment, boat handling errors, poor seamanship by other boats, loss of balance on an unstable platform and fatigue resulting in increased risk of injury. Inherent in the sport of sailing is the risk of permanent, catastrophic injury or death by drowning, trauma, hypothermia or other causes.

By taking part in the event, each competitor agrees and acknowledges that:

22.1. They are aware of the inherent element of risk involved in the sport and accept responsibility for the exposure of themselves, their crew and their boat to such inherent risk whilst taking part in the event;

22.2. They are responsible for the safety of themselves, their crew, their boat and their other property whether afloat or ashore;

- 22.3. They accept responsibility for any injury, damage or loss to the extent caused by their own actions or omissions;
- 22.4. Their boat is in good order, equipped to sail in the event and they are fit to participate;
- 22.5. It is their responsibility to familiarise themselves with any risks specific to this venue or this event drawn to their attention in any rules and information produced for the venue or event and to attend any safety briefing held for the event;
- 22.6. The provision of a race management team, patrol boats and other officials and volunteers by the event organiser does not relieve them of their own responsibilities.

23. INSPECTIONS - the fact that race officials may conduct inspections of a boat does not reduce the responsibilities of each competitor set out in these Sailing Instructions

24. INSURANCE - each participating boat shall be insured with current third party liability insurance with a minimum cover of £3,000,000 (three million pounds sterling or the equivalent in euros) per incident; this insurance shall include racing cover.

Appendix 1 - Race programme



Friday - CLASSES 0, 1, 2Q, 3a and 3b

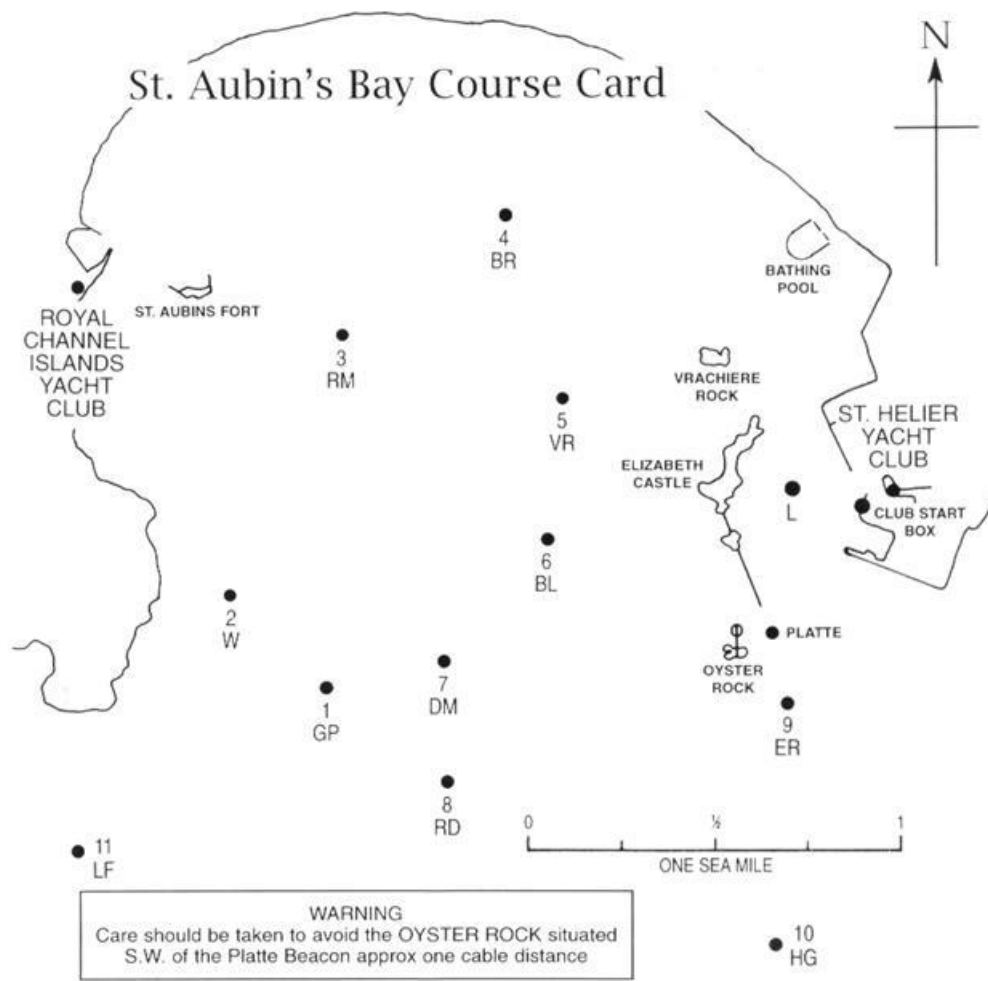
Saturday / Sunday - CLASSES 0, 1, 2Q, 3a, 3b and 5

COMMITTEE BOAT A (Carey Olsen flag displayed)

Warning Signal	Race	Class
Friday 13th September – High Water: 1438 hours – Height: 7.6m		
COASTAL RACE		
1225	SHYC Bill Coom Cup	Sportsboat 0
1225	RCIYC Tom Lee Memorial Trophy	IRC Cruiser/racer 1
1225	SHYC – Cruising Trophy	IRC Cruiser/racer 2Q
1225	Day 1 Salver	Quarter Ton 2Q
1235	RCIYC Mallard Trophy	YTC Cruiser/racer 3a
1235	SHYC JEC Trophy	YTC Cruiser/racer 3b
Saturday 14th September – High Water: 1616 hours – Height: 8.4m		
1255	RCIYC 1 st Elfin Cup – 3 races back-to-back	Sportsboat 0
1255	SHYC Ken Budden Trophy – 3 races back-to-back	IRC Cruiser/racer 1
1305	SHYC Nautilus Trophy – 3 races back-to-back	IRC Cruiser/racer 2Q
1305	Day 2 Salver – 3 races back-to-back	Quarter Ton 2Q
1315	RCIYC Morgan Grenfell 1 – 3 races back-to-back	YTC Cruiser/racer 3a
1315	RCIYC Mavourneen Trophy – 3 Races back-to-back	YTC Cruiser/racer 3b
1325	RCIYC Fairy Trophy – 3 races back-to-back	Sport-catamaran 5
Sunday 15th September – High Water: 1718 hours – Height: 9.4m		
1355	RCIYC Bolitho Urn – 2 races back-to-back	Sportsboat 0
1355	SHYC Commodore's Cup – 2 races back-to-back	IRC Cruiser/racer 1
1405	SHYC Tregear Cup – 2 races back-to-back	IRC Cruiser/racer 2Q
1405	Day 3 Salver – 2 races back-to-back	Quarter Ton 2Q
1415	RCIYC Morgan Grenfell 2 - 2 races back –to – back	YTC Cruiser/racer 3a
1415	SHYC Dyce Trophy – 2 races back-to-back	YTC Cruiser/racer 3b
1425	RCIYC Lazard Trophy – 3 races back-to-back	Sport-catamaran 5

Note: For Saturday and Sunday, succeeding races will start as soon as possible after the finish of the preceding race, in accordance with any time limit.

Appendix 2a – Race venue – St Aubin's Bay



WARNING
 Care should be taken to avoid the OYSTER ROCK situated S.W. of the Platte Beacon approx one cable distance

BUOYS, ETC., LISTED BELOW HAVE BEEN ALLOTTED THE FOLLOWING LETTERS & NUMBERS

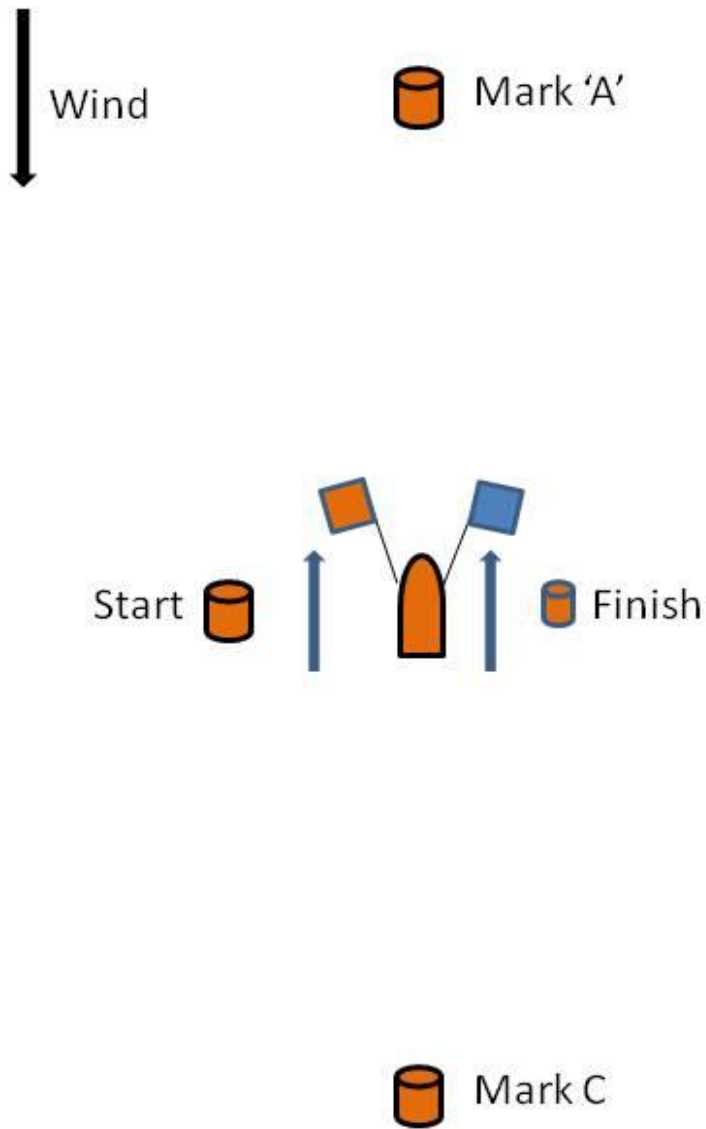
GRUNES DU PORT BUOY.....	1 GP	DIAMOND BUOY.....	7 DM
WEST MARK.....	2 W	RAUDIERE BUOY.....	8 RD
ST. AUBIN'S RACING MARK	3 RM	EAST ROCK BUOY.....	9 ER
BEACH ROCK BUOY.....	4 BR	HINGUETTE BUOY.....	10 HG
VRACHIERE BUOY.....	5 VR	LES FOURS BUOY.....	11 LF
BALEINE MARK.....	6 BL	LIMIT BUOY	L

PARTICIPATING YACHTS SHALL NOT MAKE USE OF THE DEEP WATER CHANNELS IN SUCH A WAY AS TO CAUSE OBSTRUCTION TO LARGE VESSELS USING THE PORT.

Appendix 2b – Laid and fixed marks

ID	MARKS	COLOUR	APPROXIMATE POSITION
A	Windward mark of a windward/leeward course	Orange	Laid on the day
C	Leeward mark of a windward/leeward course	Orange	Laid on the day
1 - GP	Grunes du Port buoy	Red	49°10.03'N, 02°09.12'W
2 - W	West Mark	Yellow	49°10.220'N, 02°09.393' W
3 - RM	St Aubin's Race Mark	Yellow	49°11.10'N, 02°09.21'W
4 – BR	Beach Rock buoy	Yellow	49° 11.30'N, 02° 08.42'W
5 - VR	Vrachère buoy	Yellow	49°10.94'N, 02°08.10'W
6 – BL	Baleine Buoy	Green	49°10.42'N, 02°08.22'W
7 - DM	Diamond Rock buoy	Red	49°10.12'N, 02°08.61' W
8 - RD	Ruaudière buoy	Green	49°09.77'N, 02°08.60'W
9 – ER	East Rock buoy	Green	49°09.97'N, 02° 07.30' W)
10 – HG	Les Hinguettes buoy	Red	49°09.32'N, 02°07.30'W
11 – LF	Les Fours buoy	North cardinal	49°09.60'N, 02°10.18'W
12	Passage Rock buoy	North cardinal	49°09.74'N, 02°12.28'W
16	An inflatable mark located approximately 1.25 nautical miles southwards of St Aubin's Bay. Position and description to be promulgated by Amendment posted on the official notice board (www.jerseyregatta.com) no later than 1800hrs Wednesday 11th September.		

Appendix - 2c - CBA windward-leeward course



Appendix 3 - Prizes

Prizes will be awarded as follows:



- 1.1. Perpetual trophies as indicated in the Race Programme (Appendix 1);
- 1.2. Place prizes will be awarded in each class, as follows:
 - When 3 boats are entered - first and second prizes only
 - When 4 or more boats are entered - first, second and third prizes only;
- 1.3. 'Carey Olsen Jersey Regatta Best-in-Class' prizes will be awarded to the boats with the lowest series score in their class;
- 1.4. The GBR IRC Channel Islands Championship prizes will be awarded to the boat with the lowest series score in each of Classes 1 and 2Q;
- 1.5. The Island ARK Trophy will be awarded to the Quarter Ton boat with the lowest series score.

The prize-giving will take place in St Helier YC as soon as possible after 1900 hours Sunday 15th September.

Note: First place and special prizes only will be awarded at the prize giving. Second and third place prizes will be available in the Westward Room after the prize-giving.

Appendix 4 - Social programme

Thursday 12th September - Sunday 15th September

	Function	Time	Venue
Thursday	• Welcoming reception	1900	St Helier YC 
	• Skippers' briefing	1915	
	Classes 4, 5, 6, 7, 8 & 9 Classes 0, 1, 2Q, 3a, 3b & 5	1930	
Friday	• Reception and supper	1900	RCIYC 
Saturday	• Regatta Supper Party	1900	RCIYC 
Sunday	• Reception and supper	1830	St Helier YC 
	• Prize-giving – 1st place prizes and trophies Note 1		
	• Close		

Notes

1. Only trophies, first place prizes and any special prizes will be presented at the prize-giving. Second and third place prizes will be available for collection in the Westward Room following the prize-giving.
2. Receptions and suppers on Thursday, Friday and Sunday are included in the entry fee.
3. Saturday's Regatta Supper/Party is not included; tickets for this function, priced at £20.00 per head, may be purchased through WebCollect and will be available from both the RCIYC and SHYC.